

1ST DECEMBER 2023

BOSLEY BULLETIN

I can do all things through Him who strengthens me.

Philippians 4:13



I am delighted to share with you the recent success of our Key Stage 2 Small Schools Cross Country team. Despite arriving a little later than planned, our dedicated runners managed to secure the runners-up position in the competition. I would like to extend my warmest congratulations to Oliver, Ted, Dan, and Harry, who all earned medals for their exceptional performances. In particular, Harry deserves special recognition for clinching the gold medal. Well done, boys! Your hard work and determination have paid off, and we are incredibly proud of your accomplishments.

There are many exciting events coming up at School and in our village over the next few weeks - more details later in this newsletter. Our highly anticipated Christmas Fayre will be taking place tomorrow (2nd December). It promises to be a festive and enjoyable event, and we would be delighted if you could join us. It will be a wonderful opportunity to come together as a community and embrace the joyous spirit of Christmas.

Warm regards,
Rebecca Hadfield
Headteacher





Bosley St. Mary's School Christmas Fair

SATURDAY 2ND DECEMBER
12PM-2PM AT BOSLEY SCHOOL

SANTA'S GROTTTO, RAFFLE, TOMBOLAS,
CRAFTS, HOT FOOD, TEA & CAKE
£1 ENTRY

See **YOU**
TOMORROW

OUR CLASS NEWS



BLOSSOM

We've been getting into the Christmas spirit by creating our very own homemade Christmas tree, complete with decorations made by the children themselves. We've also been busy making adorable gonks and stick men - the creativity is off the charts!



WILLOW

Team Willow brought in their favourite cuddly toys so that they could take part in our English lessons. Our writing focus was 'instructions.' The children wrote a step by step guide including all of the key features of this genre of writing. The toys caused havoc but hey are now spotless and safely back home!



OAK

This week, Oak Class has been identifying examples of personification in our class text. The children have then used their knowledge to write a poem entitled 'Autumn', which uses personification. The children were so proud of their writing that every single person in Oak Class wanted to read their first stanza aloud. Well done Oak!

Monday PE

Wear uniform,
bring PE kit



Thursday

Wear forest
school clothes



Friday PE

Wear PE kit to
school



NEWS AND UPDATES

Christingle

Please note a change of date for our Christingle service. It will now be held on Thursday 21st December at 9:30am and once again will be in Church. More details to follow.

The Nutcracker at the New Vic

Thank you to everyone who has completed the permission form / made voluntary contributions for our trip to see the Nutcracker at the New Vic theatre. If you haven't already done so, please complete the permission form [here](#). Contributions can be made via School Spider.

Cold Weather

Please remember to send children with lots of warm clothes, including hats, scarfs, gloves and sensible shoes during the colder months. It can be a couple of degrees colder in Bosley than the surrounding areas!

It is forecast to snow in the couple of weeks. We always aim to keep school open whilst balancing the safety of children, parents and staff. As always, we will keep you updated via School Spider and our social media.



CERTIFICATE WINNERS

Relate

Lili, Frankie and Elise :

*My command is this: Love each other as I have loved you.
John 15:12*



Serve

Henry, Charlotte and Lacey

Not looking to your own interests but each of you to the interests of the others. Philippians 2:4



Headteacher's Award
Oliver and Madison

Christmas at Bosley School

Nativity - Monday 18th December

Christingle - Thursday 21st December

More details to follow.



DIARY DATES 2023/24

Please note that dates can and do change - we will keep you as up to date as possible.

September

5th - School re-opens
8th - Welcome Service
20th - Parents Information Evening
28th - Rose Queen Meeting
29th - Harvest Festival

October

11th - Oak Pilgrim Day
19th - Pumpkin Party

November

1st - Parents Evening
9th - PTA AGM
10th - Remembrance Service
24th - KS2 Cross Country competition

December

2nd - Christmas Fayre
18th - Nativity
20th - Theatre Trip
21st - Christingle

January

12th - New Year Service
17th - Information Evening - Assessments

February

6th - School photos
8th - PTA Movie Night
9th - KS2 Football competition
14th - Ash Wednesday
15th - Whole School Trip
28th - Parents Evening

March

8th - Mothers' Day
27th - PTA Easter Bingo
28th - Easter

April

26th - Blossom Athletics

May

W/C 13th - Y6 SATS
17th - KS2 Archery competition

June

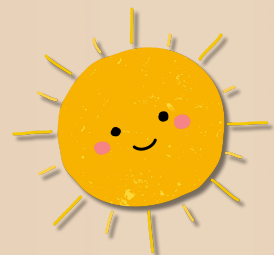
W/C 3rd - Multiplication Check (2 week window)
W/C 10th - Phonics Screening Check
15th - Bosley Village Fete
28th - KS2 Cricket competition
TBC - Sports Day

July

8th - 10th - Residential
12th - Annual Reports
18th - Bosfest 2024
19th - Leavers' service, last date of school

AUGUST

Summer holidays!



You are warmly invited to St. Mary's Bosley

CHRISTMAS NATIVITY SERVICE IN THE BARN



Sunday 17th December at 10.30am

@

PYE ASH FARM, BOSLEY, MACCLESFIELD SK11 0PN

All welcome



Come and join us to experience the sights, sounds, smells and feel of the humble circumstances into which Jesus was born the first Christmas.

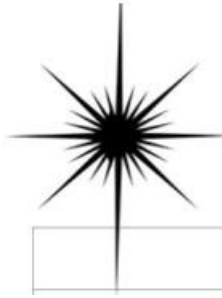


We need your help!

Come dressed as your favourite Christmas character and help us act out the nativity. (dress up warm, you're in a barn!)

Music band, carol singing, refreshments.
(Collection in aid of Church funds)





Services For December



St. Mary's Bosley

Fri 1st 8:00 pm	SILK BRASS Band in concert in the church Our traditional start the festive period, with the band's competition pieces, Christmas tunes and a carol or two to sing along to! £10 adult (£2 children); includes tea, coffee & mince pies
Sat 2nd 12 – 2 pm	Bosley School Christmas Fair
Sun 3rd 3:30 pm	Christingle – service for all ages Make a Christingle and experience the candle lit church
Sun 10th 4:30 pm	Christmas Crafts & Tea at the Methodist Chapel
	5:30 pm Carol Service at the Methodist Chapel
Sun 17th 10:30 am	LIVE Nativity service on the Farm. Come to Pye Ash Farm to experience the sights, sounds & <u>smells of the</u> first Christmas. Dress up as a Nativity character and help act out the Nativity. Music band, carol singing & refreshments.
Mon 25th 10:00 am	Christmas Day Communion

